



Fitting instructions for rear frame kit BMW K75 / K100 / K1100 SE-30-21633

Note:

- When mounting the rear frame, ensure that the motorbike is securely positioned
- When removing the shock absorber, secure the motorbike against tipping backwards
- Allow the engine and exhaust system to cool down before installation
- When installing or removing original parts, proceed in accordance with the model-specific repair instructions
- Tightening torques for screws must be taken from the model-specific repair instructions
- Tighten all rear frame bolts after 50 km

Please proceed with care. Incorrect installation can lead to serious accidents and damage to the vehicle. Please note that we cannot accept any warranty for vehicle-specific tolerances. In individual cases, it may be necessary to adapt our product. Please have work on safety-relevant components (e.g. brakes, wheels, cables, chassis) carried out by specialised personnel only. These installation instructions have been compiled by us to the best of our knowledge, all information is without guarantee. We recommend checking all unsecured screws regularly and retightening them if necessary. Ensure that your handlebars and wheels can move freely at all times.

Procedure:

Disconnect the battery (**note:** first disconnect the negative terminal, then the positive terminal)

Remove original seat bench; side cover; inner mudguard and rear panelling



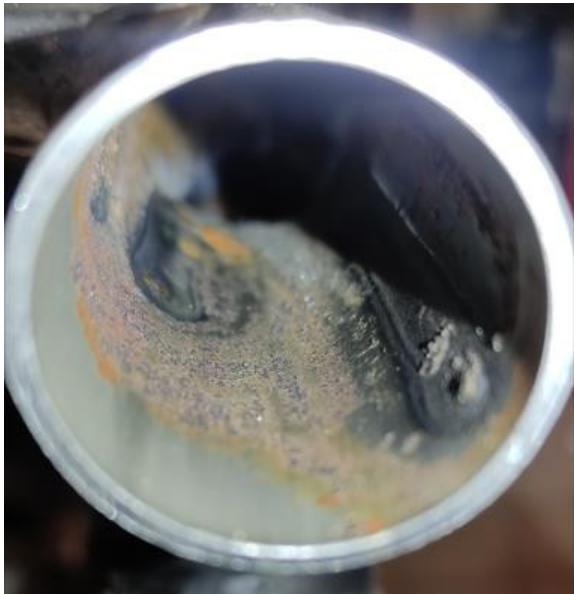
Apply markings for cut edges on both sides 50 mm behind the cross strut



Cut off the original rear frame at the marking.

Tip: We recommend cutting 1-2 mm behind the marking so that the frame tube can be ground square afterwards

Check whether there are any protrusions inside the frame tube due to weld seams and grind them out if necessary

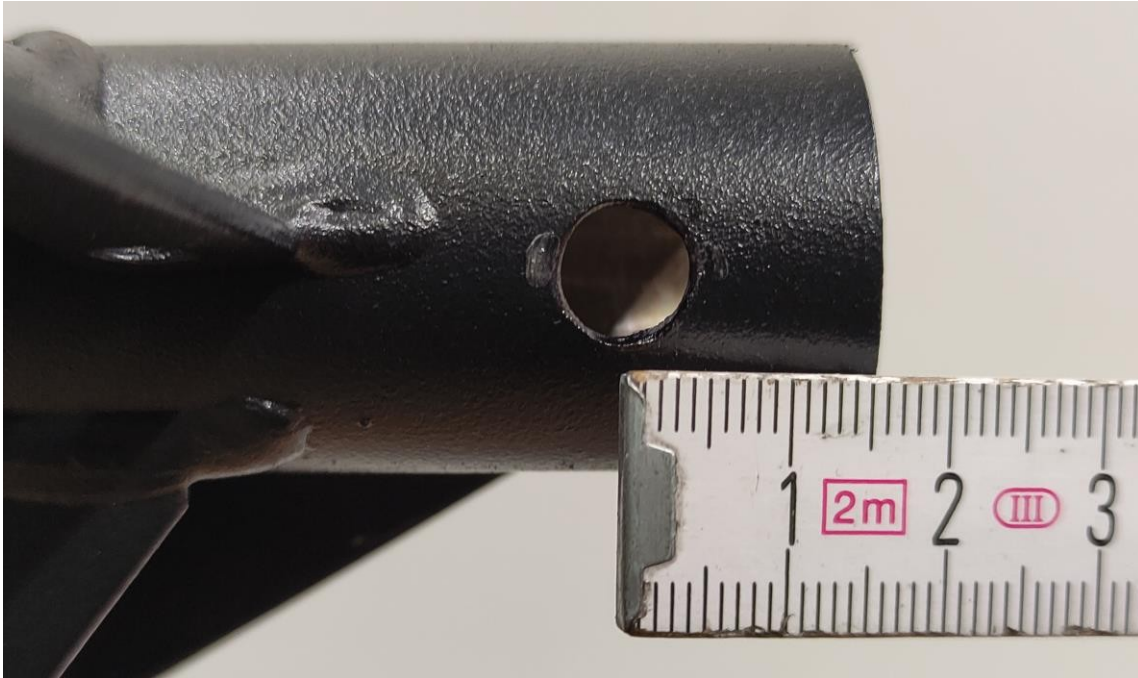


The protruding plate of the shock absorber mount can be shortened up to the weld seam



The gusset plate and folding handle (jacking aid) on the left-hand side can be completely removed

If the loop is to be bolted rather than welded, drill a hole in the centre of the inside of the frame tube on both sides using an 8.5 mm Ø drill bit. Please mark this 15mm away from the cut edge



Slide the loop into the rear frame and screw it in place with M8x20 screws and washers

